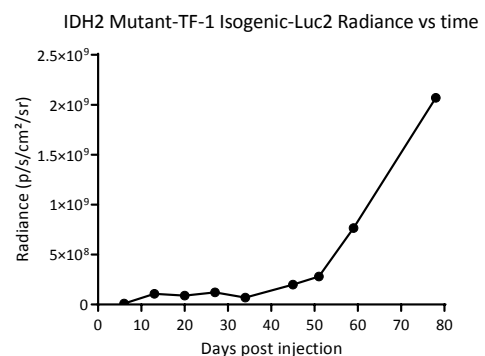
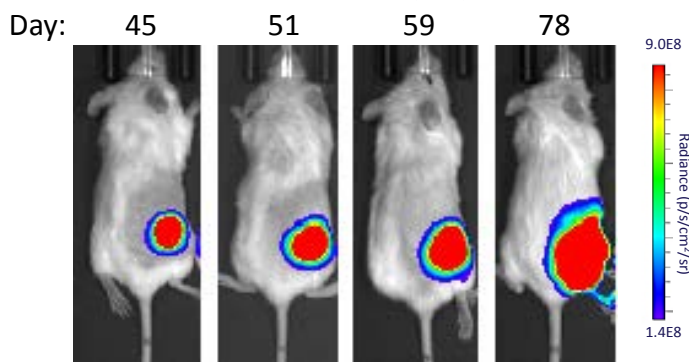


# Technical Data Sheet:

## IDH2 Mutant-TF-1 Isogenic-Luc2

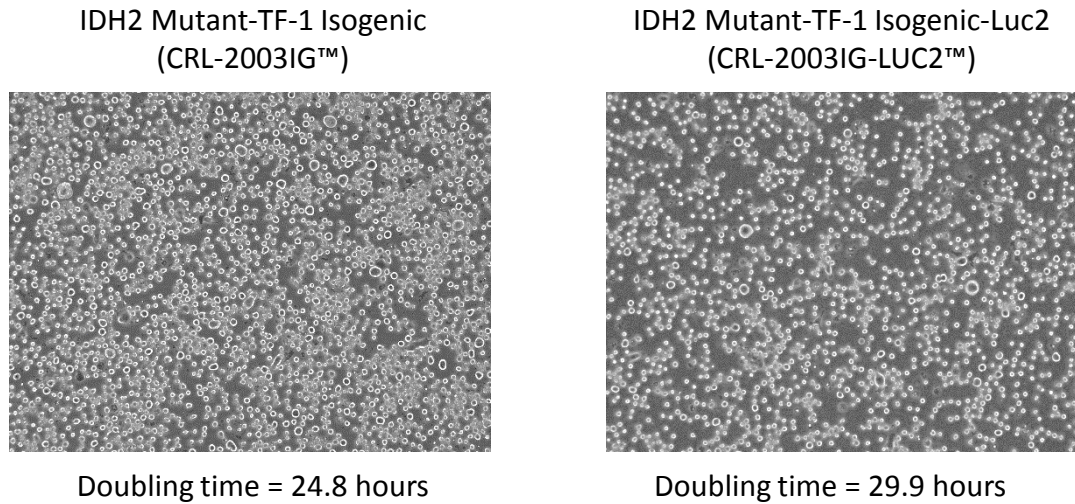
<b>ATCC® Number</b>	CRL-2003IG-LUC2™
<b>Organism</b>	<i>Homo sapiens</i>
<b>Tissue/Disease Source</b>	Erythroleukemia
<b>Product Description</b>	<p>This luciferase expressing cell line was derived from IDH2 Mutant-TF-1 Isogenic cell line by transduction with lentiviral vector encoding firefly luciferase gene (<i>luc2</i>) and subsequently through single cell cloning.</p> <ul style="list-style-type: none"> <li>• Signal noise ratio: <math>\geq 1,000</math></li> <li>• Bioluminescence: <math>\geq 100,000</math> photons/cell/sec (subject to imaging and culture condition)</li> <li>• Confirmed to be murine pathogen free</li> </ul>
<b>Application</b>	IDH2 mutant leukemia model. Excellent signal/background ratio and stable Luciferase expression make this cell line ideal for <i>in vivo</i> bioluminescence imaging of xenograft animal model to study human cancer and monitor activity of anti-cancer drug. It also can be used in cell-based assays for cancer research.

### *In vivo* Bioluminescent Imaging



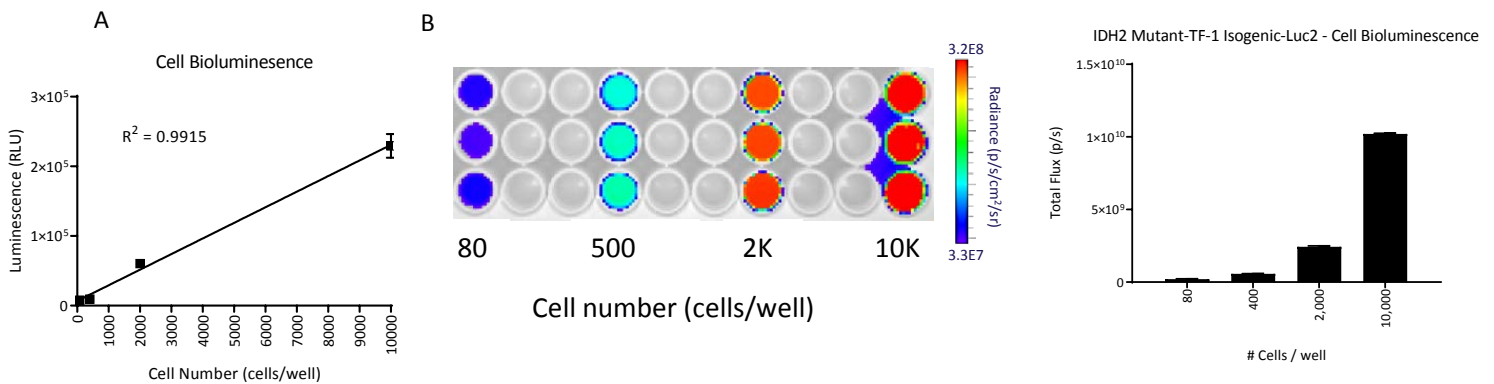
**Figure 1: *In vivo* detection of luciferase activity of IDH2 Mutant-TF-1 Isogenic-Luc2.** IDH2 Mutant-TF-1 Isogenic-Luc2 cells ( $3 \times 10^6$ ) were injected subcutaneously into the dorsal region near the thigh of female NSG mice. Tumor growth was monitored weekly using a Xenogen IVIS Spectrum. *In vivo* bioluminescence imaging demonstrated the progression of tumors.

## Cell Morphology



**Figure 2: Cell morphology of IDH2 Mutant-TF-1 Isogenic parental and IDH2 Mutant-TF-1 Isogenic-Luc2.** Cells were maintained in ATCC recommended culture conditions. Cell morphology was observed under microscopy and images were captured by digital camera.

## Luciferase Expression



**Figure 3: Linearity of luminescence and of *in vitro* quantification of luciferase activity of IDH2 Mutant-TF-1 Isogenic-Luc2.** Cells were seeded in a 96-well plate at indicated cell numbers per well, and Bright-Glo (Promega) was added to the indicated wells. The luminescence of the plate was read within 10 minutes using a luminescence plate reader (A) and determined to have a linear correlation of bioluminescence intensity with cell numbers. (B) The plate was imaged using a Xenogen IVIS Spectrum to quantify the photons emitted per cell.

© 2019 American Type Culture Collection. The ATCC trademark and trade name, and any other trademarks listed in this publication are owned by the American Type Culture Collection unless indicated otherwise.

These products are for laboratory use only. Not for human or diagnostic use. ATCC products may not be resold, modified for resale, used to provide commercial services, or to manufacture commercial products without prior ATCC written approval.